

# BioSolveIT

expect actives!

## A Gaze into Chemical Space



Scaffold Hopper



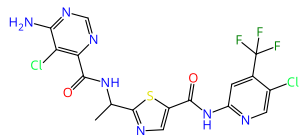
Analog Hunter



Motif Matcher

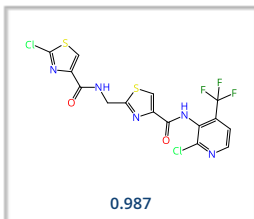
Query compound

Tovorafenib  
Pan-Raf inhibitor  
Kinase inhibitor used for the  
treatment of glioma.  
(Cunniff et al. 2013)

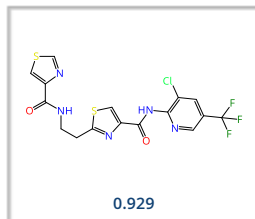


All displayed molecules are the best ranking results retrieved with **infiniSee** in the respective modes. The associated similarity score is provided for each entry in the box.  
**Scaffold Hopper (FTrees)**: Fuzzy pharmacophore.  
**Analog Hunter (SpaceLight)**: Tanimoto similarity.  
**Motif Matcher (SpaceMACS)**: Maximum common substructure.

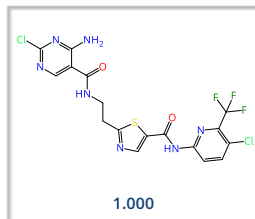
AMBrosia



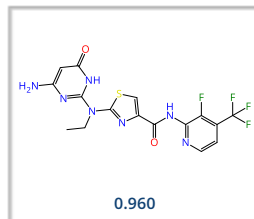
CHEMriya



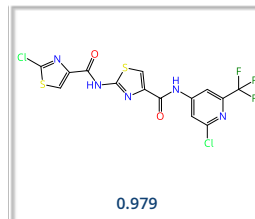
eXplore



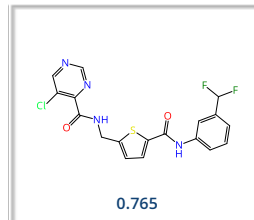
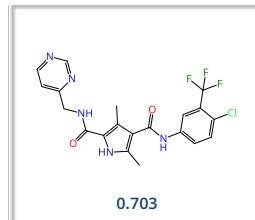
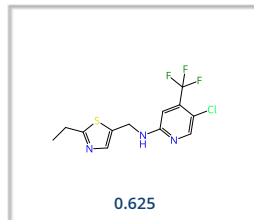
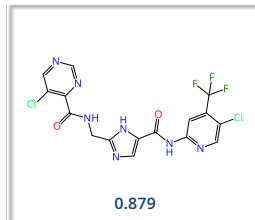
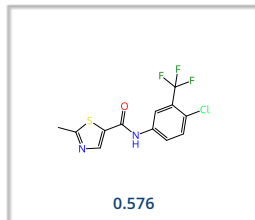
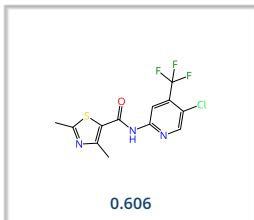
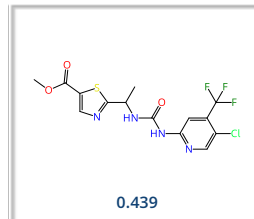
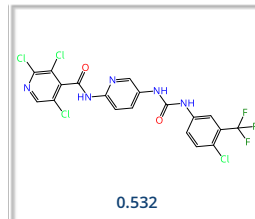
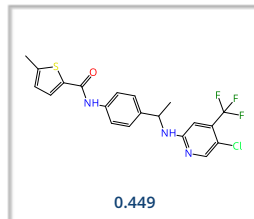
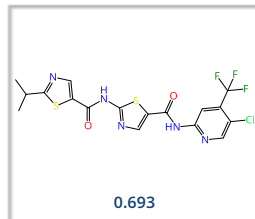
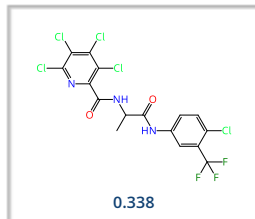
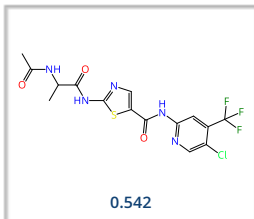
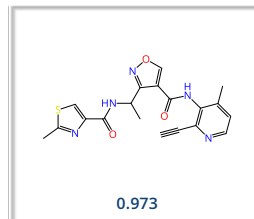
Freedom Space



GalaXi



REAL Space



Mine with **infiniSee** for more compounds from trillion-sized Chemical Spaces.  
Visit us for sophisticated drug discovery software solutions:  
[www.biosolveit.com/infiniSee](http://www.biosolveit.com/infiniSee)