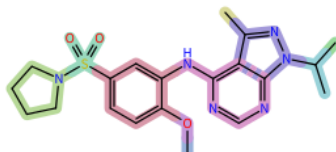
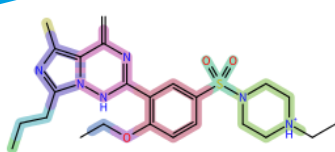




infiniSee

Unlimited Accessibles

infiniSee is your Chemical Space navigation platform. Based on similarity, infiniSee finds molecules of interest in screening libraries or Chemical Spaces of almost infinite size. Given a template or query molecule, infiniSee returns unexpectedly similar molecules.



1.000
1.000
0.995
0.995
0.753
0.866
1.000
0.951
1.000
0.998

Find hidden similarities



Discover unseen possibilities

Find molecules in unprecedented, large spaces of 10^{14} structures and more, or search your own in-house library for actives.



See hidden similarities

Similarity between a query and hit molecules is pleasingly visualized for you to select compounds effortlessly. infiniSee will show you *why* it considers something alike.



Distant neighbors in action

Mine compound libraries for interesting scaffold hops. infiniSee finds molecules which are distant at first sight, yet very close in chemistry and pharmacophore-based action.



Unlimited accessibles

From virtual to vial within days! Only what is highly likely to be formed in the lab will be proposed during infiniSee's Chemical Space navigation. Collaboration with our partners allows delivery of desired hits within few weeks.

Available On-Demand
Chemical Spaces:
REAL Space (Enamine)
GalaXi (WuXi)
CHEMriya (OTAVA)

The underlying concept of infiniSee is strikingly easy: instead of searching already "assembled" molecules, we instead perform a combinatorial build-up of compounds from fragments.

Conquer the Chemical Space