

BioSolveIT Nodes Quick Guide for KNIME (>= 2.1.0)

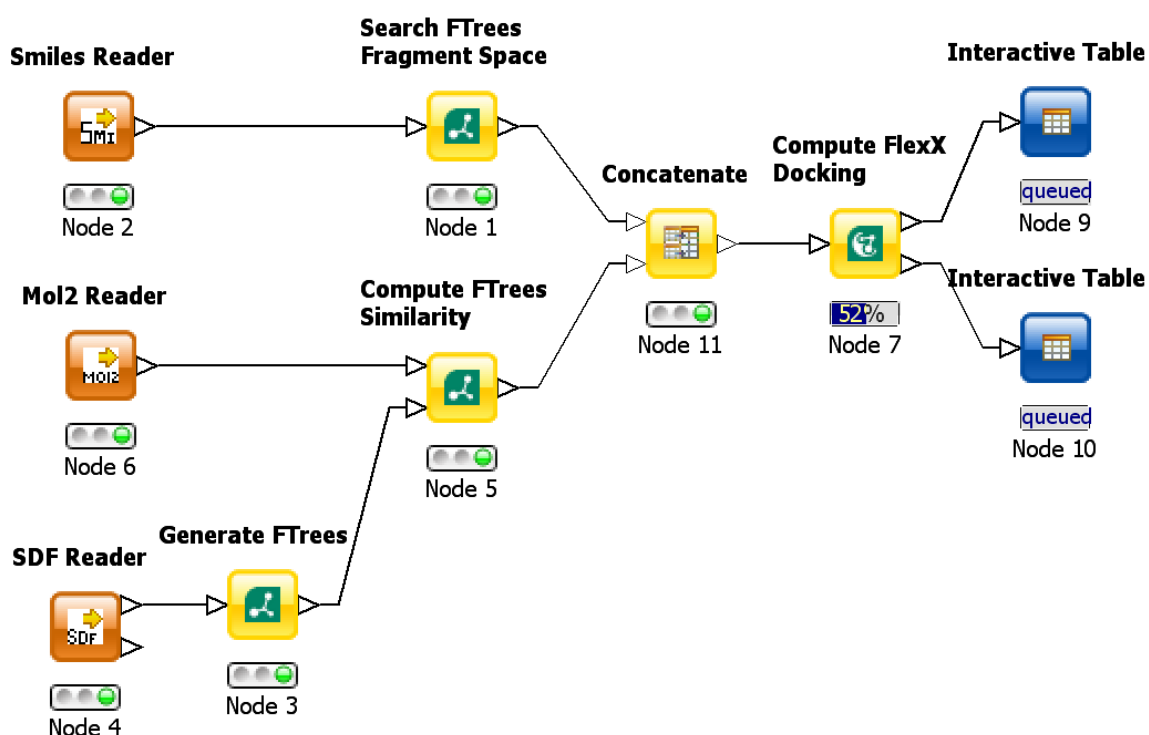
Document Revision 4

Version 1 - 27. Jan 2009

Version 2 - 02. Jun 2009

Version 3 - 26. Aug 2009

Version 4 - 20 Dec 2009

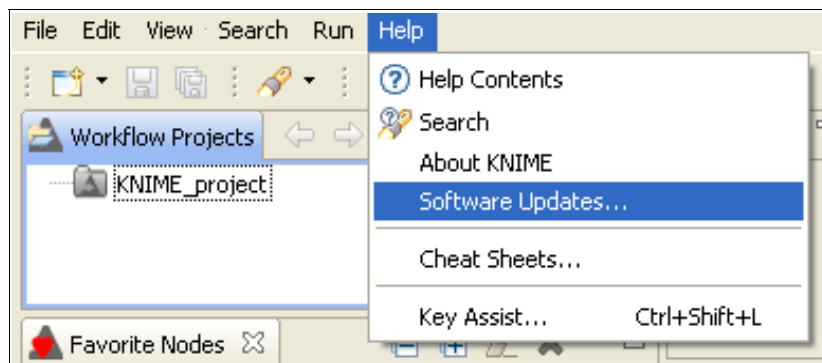


- Table of Contents -

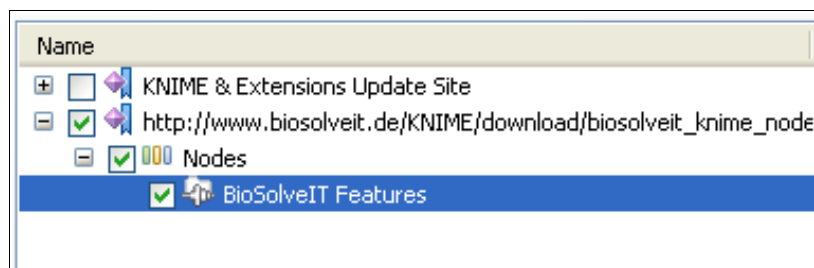
1. Installing BioSolveIT Nodes for KNIME
 - Installing from the Scratch
 - Updating an existing Binding
 - Replacing with a newer Binding
1. Configure FlexX and FTrees *Global Settings*
2. Configure FlexX and FTrees *Instance Settings*

1. Installing BioSolveIT Nodes for KNIME

- Installing from the Scratch
- Open your Updatemanager



- Switch to the Tab „Available Software“
- Click on „Add Site...“ on the right side.
- Fill out the form:
 - URL: http://www.biosolveit.de/KNIME/download/biosolveit_knime_nodes
- Once you have added our updatesite it will be added in your list.
- Simply open the node and choose the version you want to install:

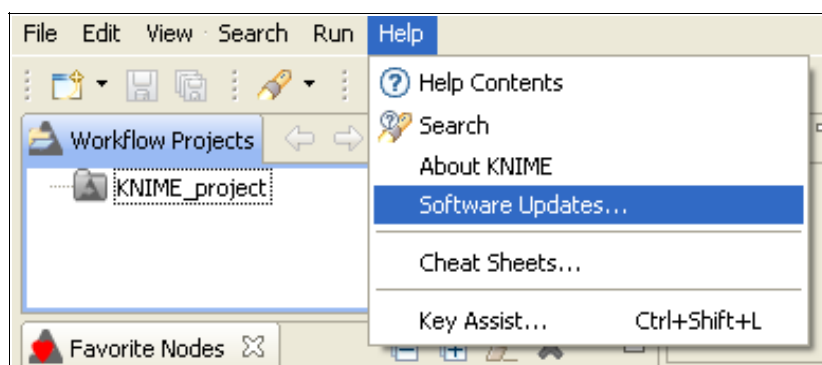


- Click on „Install...“ on the top right to install your selected nodes.
(KNIME will automaticly select all dependencies required by our node)

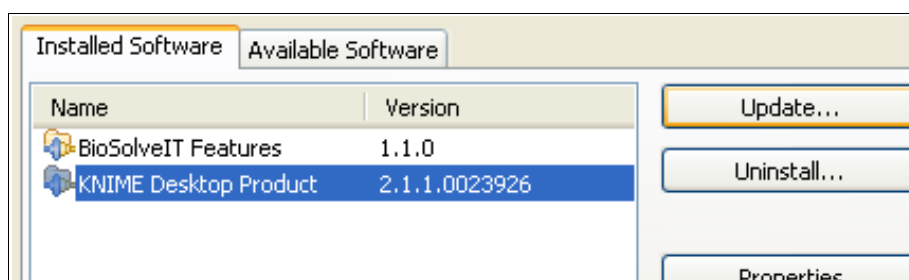
- If the automatic dependency detection was successful following additional packages will be installed:
 - *KNIME Base Chemistry Types & Nodes*
- Click on Next and follow the instructions.
- Once you have installed them restart KNIME to load the newly installed nodes into your node repository.
- **Updating an existing Binding**

If you have already installed the BioSolveIT Nodes for KNIME, you may want to check for updates. However - Eclipse will do this for you automatically - But sometimes it is useful to test by hand for updates.

- Open your Configuration Manager.



- Switch to the tab „Installed Software“
- Simply click on the node you want to update and click on „Update...“ in the top right corner.

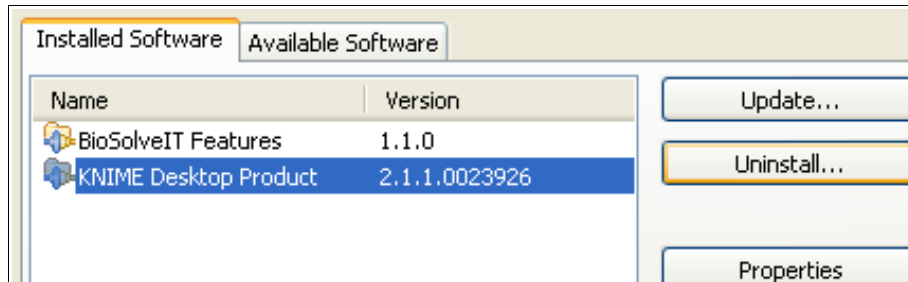


- If there is an update available, simply follow the instructions.
- Repeat this step for each of your plugins you want to check for updates.

- **Replacing with an newer Binding**

Sometimes you need or want to update\downgrade to a other Binding Version. Then you have to delete the old version and then install the newer one (or vice versa).

- Open your Configuration Manager like in the image above.
- Click on the plugin you want to replace.
- Click on „Uninstall...“ to remove it.

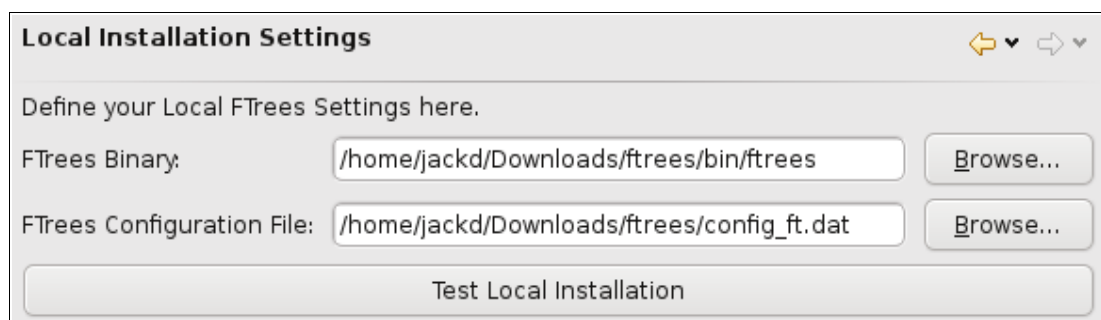


- Once you are done, follow the Guide above „Install from the Scratch“ - just skip adding the Updatesite.

2. Configure FlexX and FTrees Global Settings

The first time you install the Nodes, you have to define your FlexX and\or FTrees settings. This have to be done in the Global Settings and will be applied to all your nodes.

- To open the Global Settings click on File → Preferences...
- Navigate through the left Treeview to:
 - KNIME → BioSolveIT Settings → FTrees for FTrees
 - KNIME → BioSolveIT Settings → FlexX for FlexX
- Configure the Settings correctly.



- You can test the Settings of each page by clicking on the „Test“ Buttons.

3. Configure FlexX and FTrees Instance Settings

You can define some values inside each node. To reach the node configuration dialog, simply drag and drop the node to your workflow - rightclick on it and select „Configure“ to open its Dialog. More information about the configuration you can find in the description of each node.