

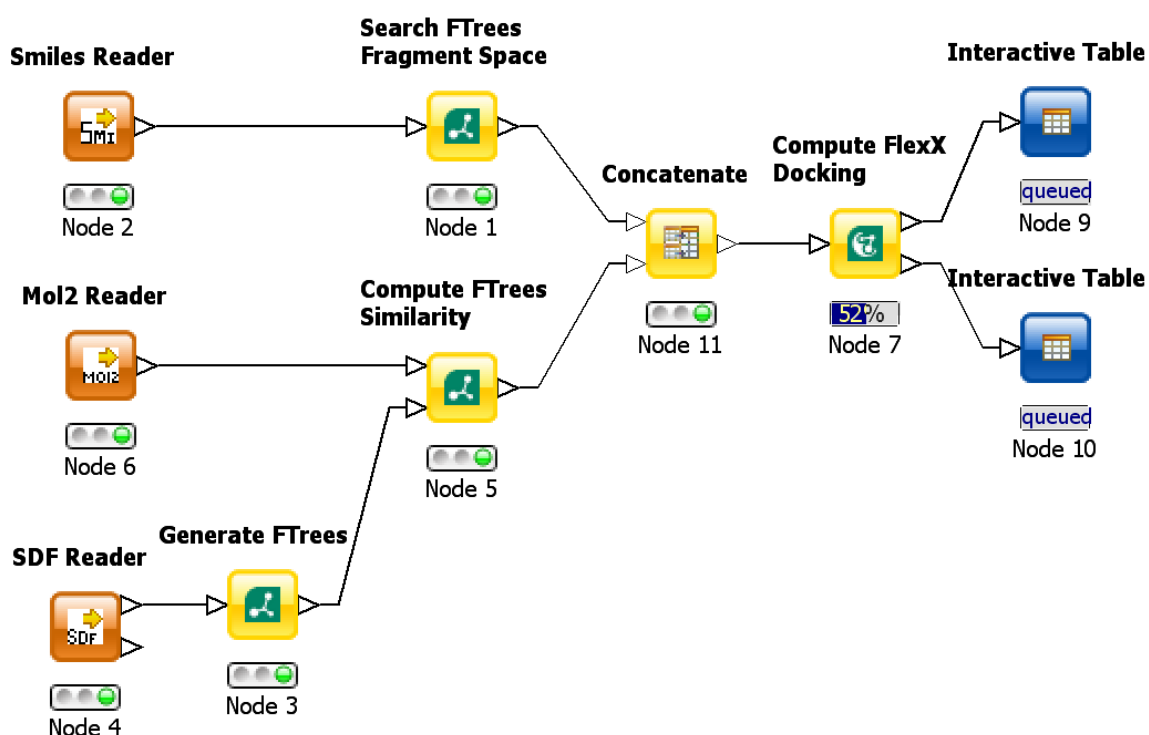
# BioSolveIT Nodes Quick Guide for KNIME (< 2.1.0)

Document Revision 3

Version 1 - 27. Jan 2009

Version 2 - 02. Jun 2009

Version 3 - 26. Aug 2009



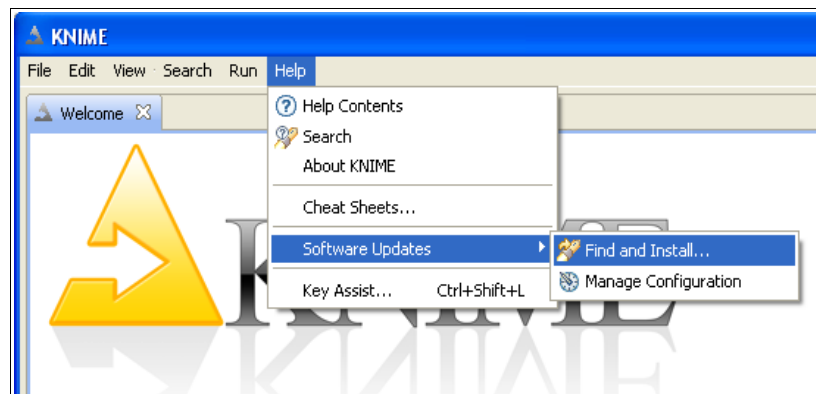
## - Table of Contents -

1. Installing BioSolveIT Nodes for KNIME
  - Installing from the Scratch
  - Updating an existing Binding
  - Replacing with a newer Binding
1. Configure FlexX and FTrees *Global Settings*
2. Configure FlexX and FTrees *Instance Settings*

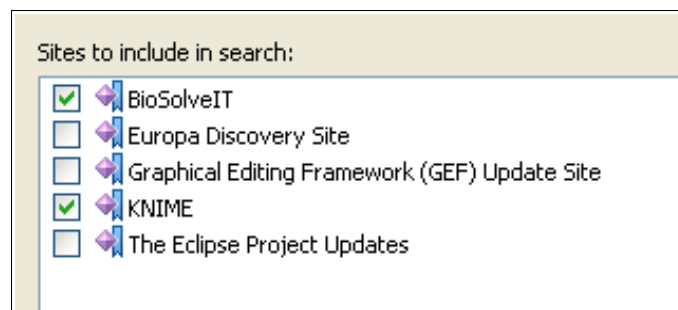
---

## 1. Installing BioSolveIT Nodes for KNIME

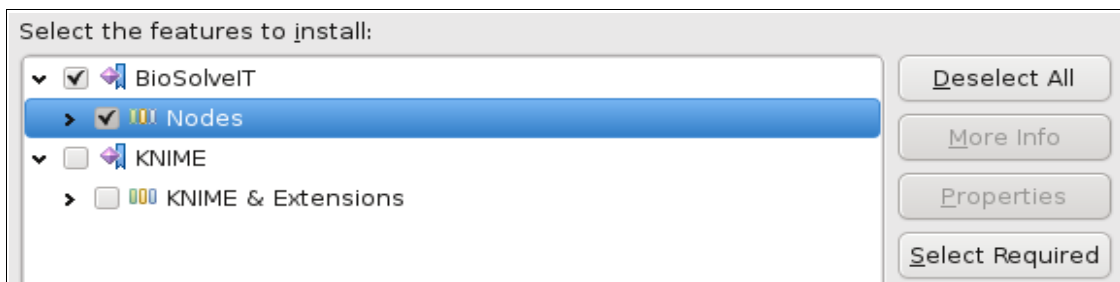
- Installing from the Scratch
- Open your Updatemanager



- Select „Search for new features to install...“ and click on next.
- Click on „New Remote Site...“ to add our Repository.
- Fill out the form:
  - Name: BioSolveIT
  - URL: [http://www.biosolveit.de/KNIME/download/biosolveit\\_knime\\_nodes](http://www.biosolveit.de/KNIME/download/biosolveit_knime_nodes)
- Once you have created the Updatesite select the following nodes:

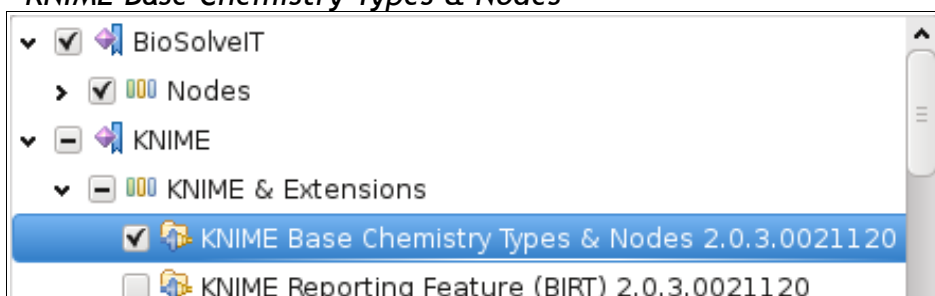


- Click on Finish.
- Select the Node Package and click on „Select Required“ to automatically fix its dependencies.  
(Sometimes it's required to open the „KNIME“ Tree-Entry to correctly detect the dependencies.)



- If the automatic dependency detection was successful you will have the following package selected:

- *KNIME Base Chemistry Types & Nodes*

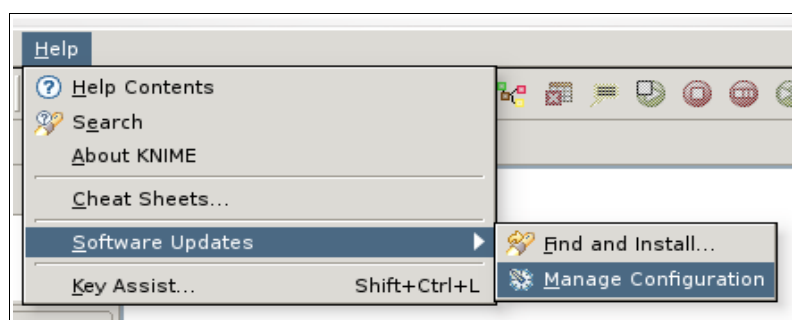


- Click on Next and follow the instructions.
- Once you have installed them restart KNIME to load the newly installed nodes into your node repository.

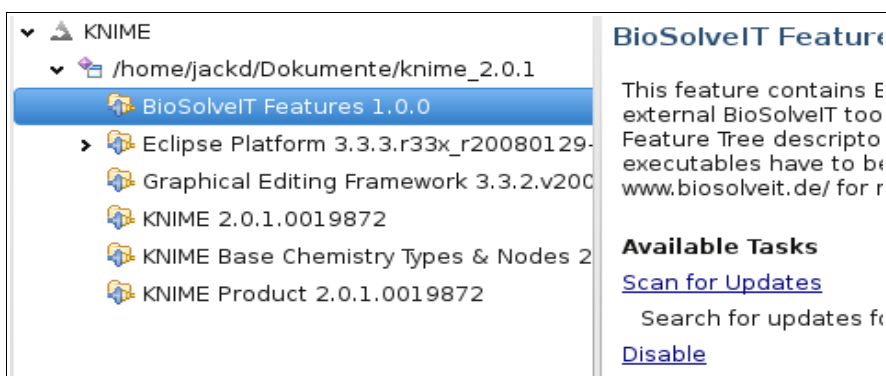
### • Updating an existing Binding

If you have already installed the BioSolveIT Nodes for KNIME, you may want to check for updates. However - Eclipse will do this for you automatically - But sometimes it is useful to test by hand for updates.

- Open your Configuration Manager.



- Open the Treeview on your left and select one of the Nodes you want to check for updates. Then click on the right side on „Scan for Updates“

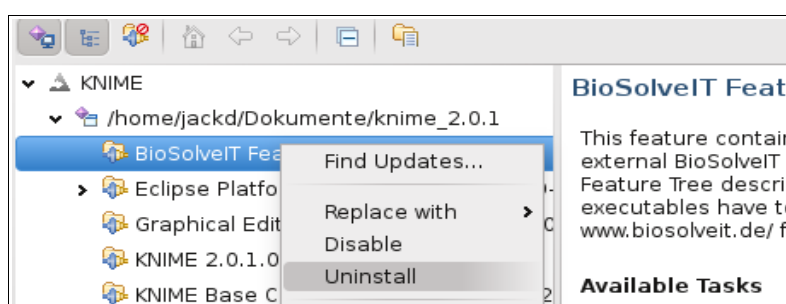


- If there is an update available, simply follow the instructions.
- Repeat this step for each of your plugins you want to check for updates.

### ● Replacing with an newer Binding

Sometimes you need or want to update\downgrade to a other Binding Version. Then you have to delete the old version and then install the newer one (or vice versa).

- Open your Configuration Manager like in the image above.
- Rightclick on the Plugin you want to uninstall and click on „Uninstall“
- Follow the instructions on the screen and restart KNIME before installing the new binding.



- Once you are done, follow the Guide above „Install from the Scratch“ - just skip adding the Updatesite.

## 2. Configure FlexX and FTrees Global Settings

The first time you install the Nodes, you have to define your FlexX and/or FTrees settings. This has to be done in the Global Settings and will be applied to all your nodes.

- To open the Global Settings click on File → Preferences...
- Navigate through the left Treeview to:
  - KNIME → BioSolveIT Settings → FTrees for FTrees
  - KNIME → BioSolveIT Settings → FlexX for FlexX
- Configure the Settings correctly.



**Local Installation Settings**

Define your Local FTrees Settings here.

FTrees Binary:

FTrees Configuration File:

- You can test the Settings of each page by clicking on the „Test“ Buttons.

## 3. Configure FlexX and FTrees Instance Settings

You can define some values inside each node. To reach the node configuration dialog, simply drag and drop the node to your workflow - rightclick on it and select „Configure“ to open its Dialog. More information about the configuration you can find in the description of each node.